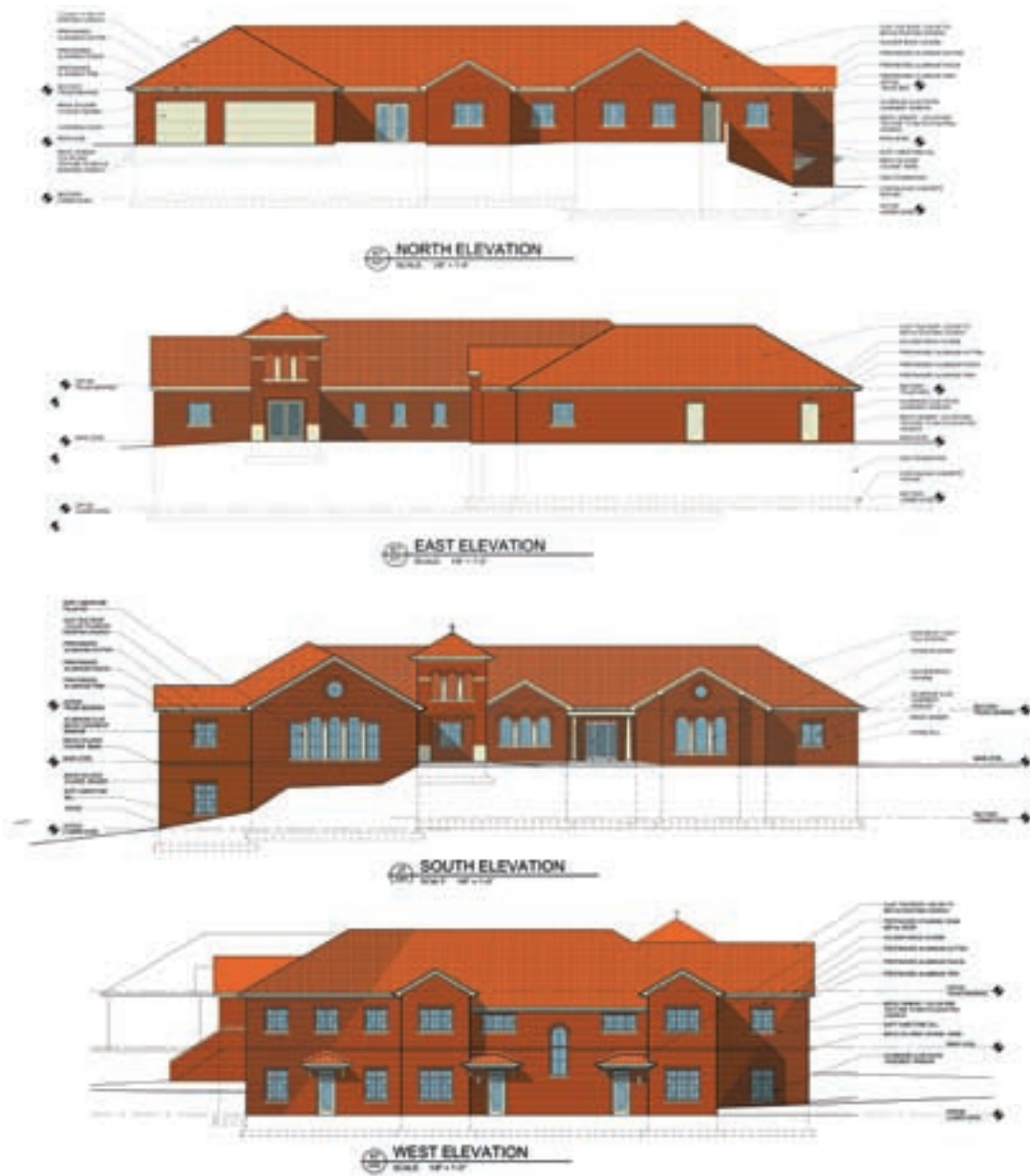


Working Together to Grow in Grace and Service

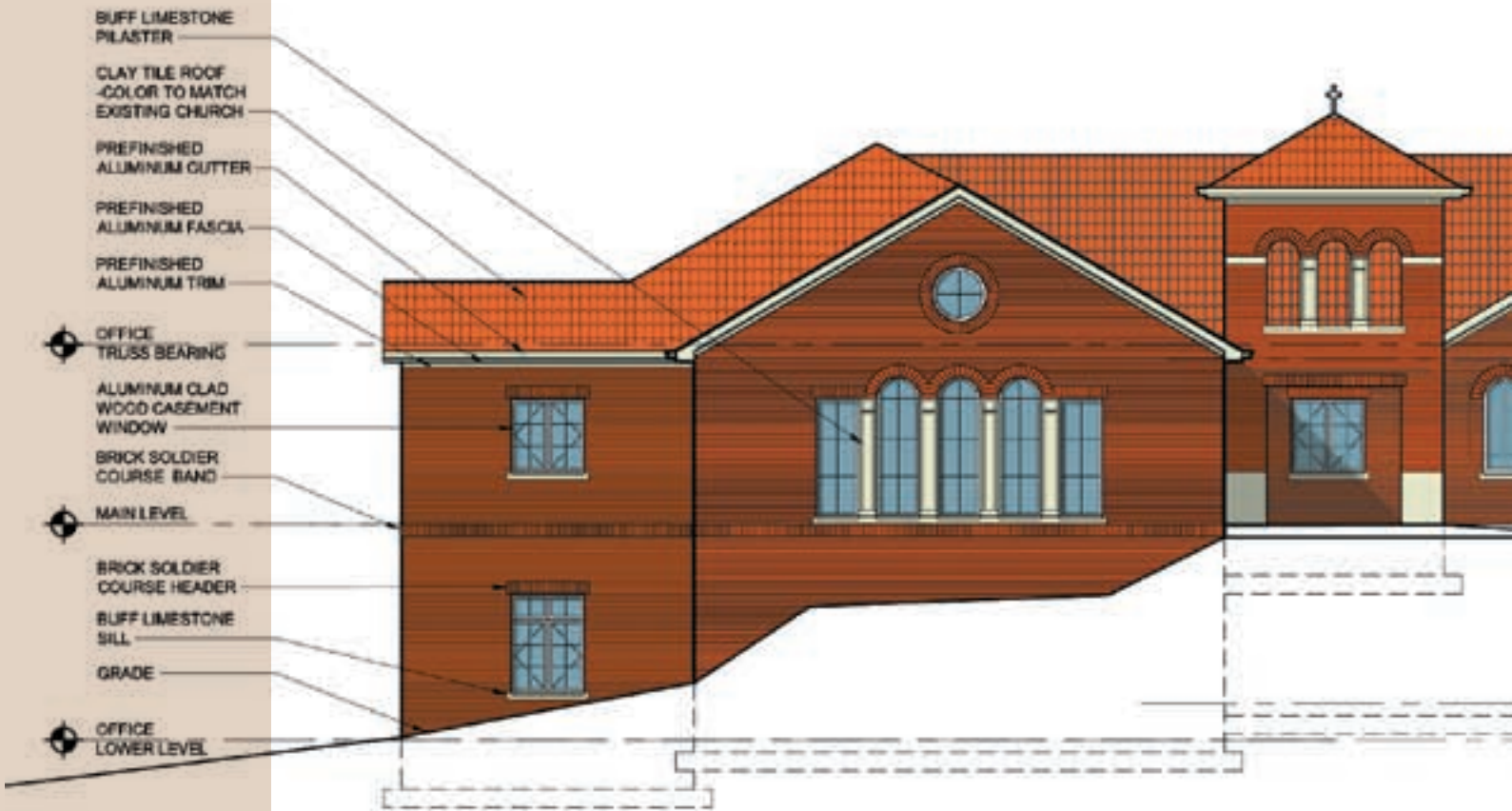




Almighty God has truly blessed Sacred Heart of Jesus Parish and so we have much for which we are very grateful. There is a long history in our parish family of many generous and self sacrificing people who have made our parish what it is today. Ours is a legacy of faith which can continue only if we continue that same spirit of sacrifice and generosity. We can have a future of an ever deepening faith in God and of service to His people if we are willing to carry on in our rich tradition of generosity with our time, talent, and treasure. In order ***To Grow in Grace and Service*** we must all work together, each contributing what they can in a spirit of genuine stewardship, which acknowledges God as the giver of all our gifts and our duty to return a portion of His blessings in order to accomplish the work of the Gospel of Jesus Christ. I pray that we can count on your continued generosity in order to accomplish our upcoming project.

As you know, we have been planning to build a new parish office building, which would include a new rectory, as well as build an addition to our parish school. The present parish office is now in the old Bender house which is over one hundred years old. It was a very nice home at one time, but it is no longer adequate as a parish office. As our parish staff has grown to better serve our parish community, we do not have the space for everyone. Part of our parish staff is now in the old convent, which is between the parish office and the rectory. All three of these houses are close to one hundred years old or more.

(continued on page 3)

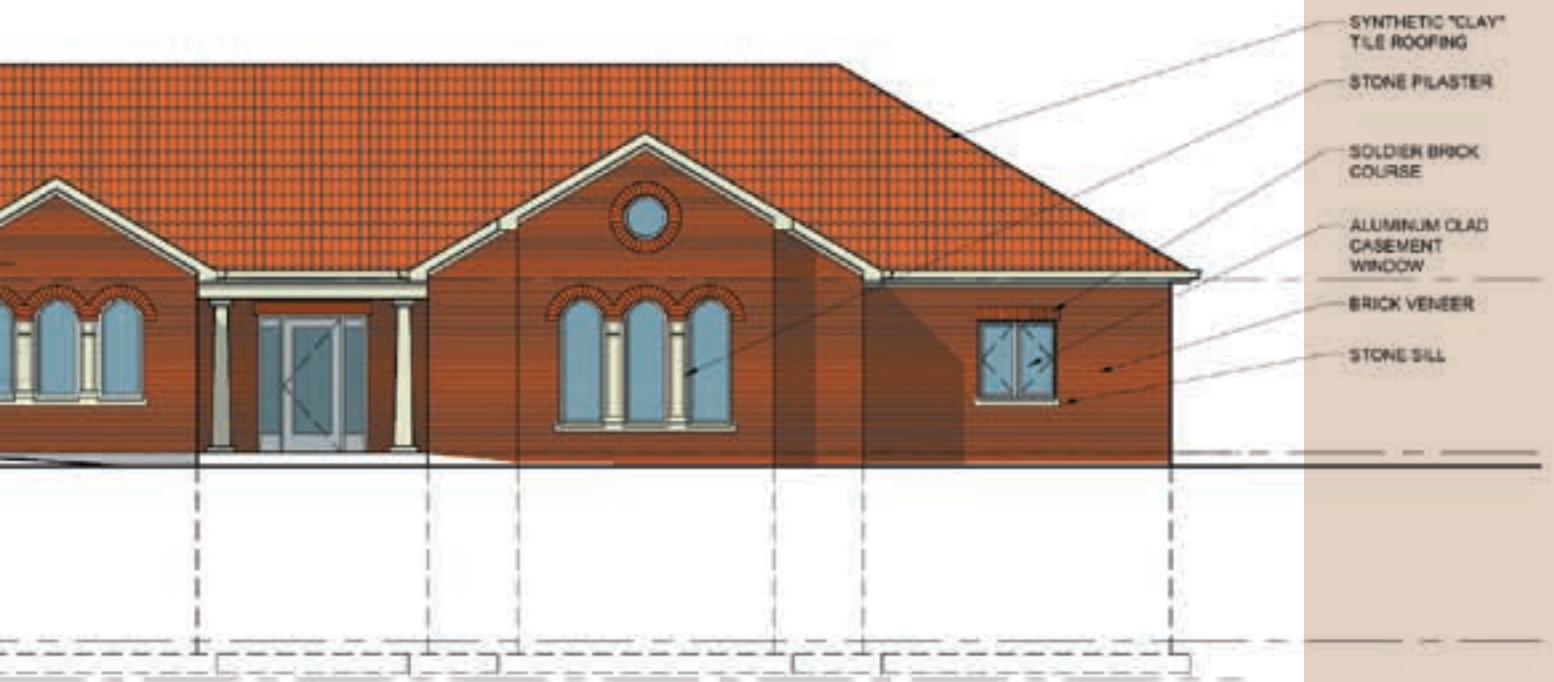


The parish office /rectory building we are planning will house our entire staff with extra room for future growth and some more meeting rooms for our parish groups. The rectory would be for two priests so that if we would ever be in a position to have an associate pastor again, we would have the room.

The addition to the school will include a new music room, art room and two new classrooms in addition to making the whole building handicap accessible. Our present music room is a converted storage room. The art room and one classroom is on the lower level of the old building. This area of the building is very close to being a basement like area. So we are really in need of updating and expanding our school again. The last expansion was completed in 1994.

This project will also include more parking and much more attractive parish grounds. The end result will be something that will help us to continue to grow in faith and service to our Lord and His people. We are all called to grow in our faith and we are all called to serve our Lord in His people. I hope you will be able to respond in a very generous way by giving a portion of your blessings. Whatever you are able to give will be appreciated by many and I know that God will bless you for your generosity.

Fr. Joseph L. Labak
Pastor, Sacred Heart Parish



Memorial Gift Opportunities

Parish Offices and Rectory

| Gift | Memorial |
|----------|--------------------------|
| \$25,000 | Pastor Office |
| \$50,000 | Pastor Suite |
| \$25,000 | Associate Pastor Office |
| \$25,000 | Associate Pastor Suite |
| \$25,000 | Deacon Office |
| \$25,000 | Parish Library |
| \$25,000 | Youth Room |
| \$25,000 | St. Vincent de Paul Room |

Parish School

| Gift | Memorial |
|-----------|--------------|
| \$100,000 | Art Room |
| \$100,000 | Music Room |
| \$100,000 | Class Room 1 |
| \$100,000 | Class Room 2 |

Church

| Gift | Memorial |
|-----------|--------------------------------------|
| \$250,000 | Portico (East Door of the Church) |

Church Grounds

| Gift | Memorial |
|------------------------|------------------------|
| \$50,000 | Sacred Heart Courtyard |
| \$10,000 (per tree) | Oak Trees |

See Page 7 for other gift opportunities and pledge payment plans.

Parish Offices and Rectory

Main Level

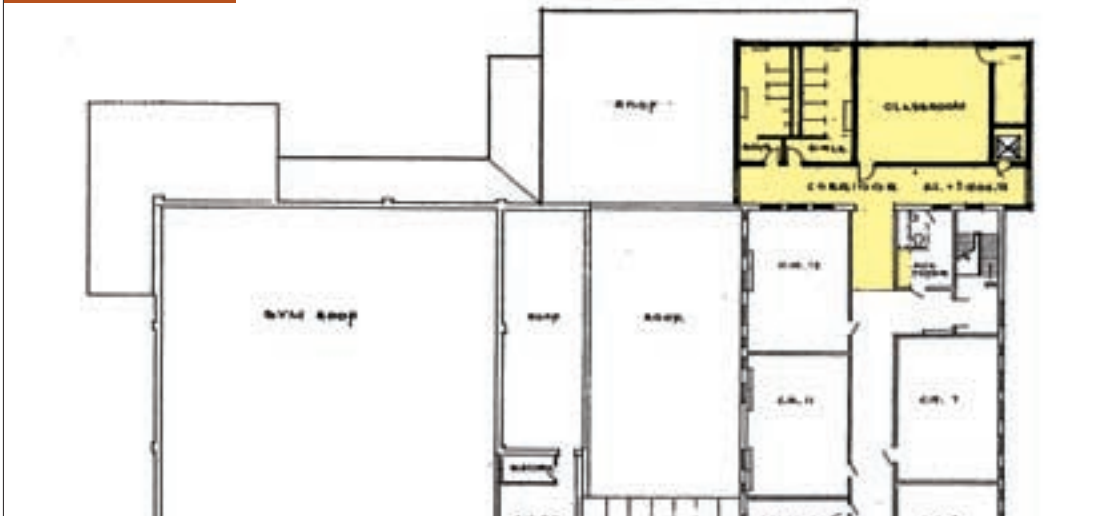


Lower Level

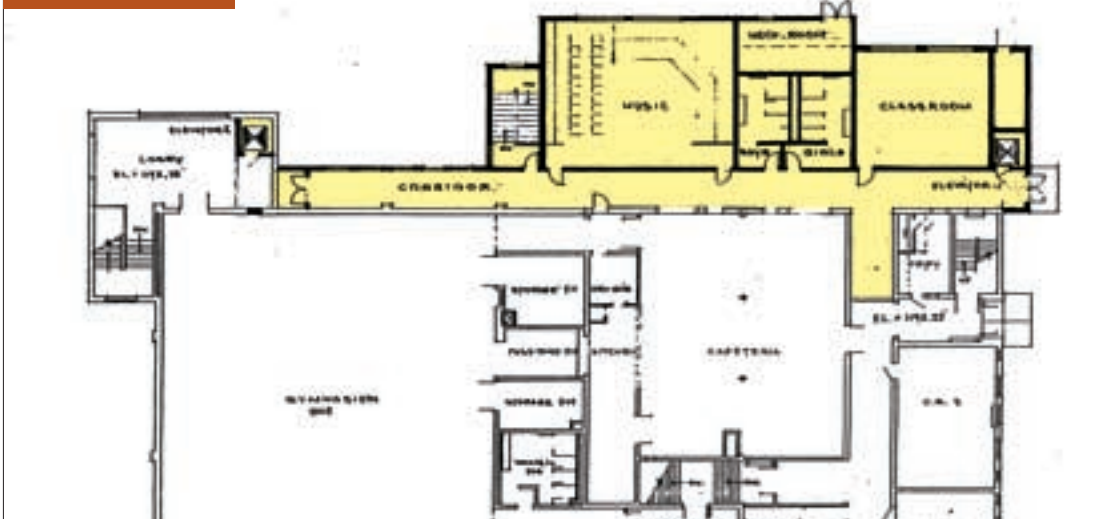


Parish School

Second Floor



First Floor



Ground Floor



How to Give a Memorial Gift

Memorials are reserved on a first come, first served basis and are reserved only once, unless it is a multiple shared item. Once a memorial is reserved, it is no longer available.

Once you have selected a memorial item you should do the following:

1. Call the Parish Office and ask if the item is still available.
2. If the memorial is available, the person will ask for the name and address of the donor. The memorial is then reserved.
3. If the item has already been reserved, the person in the parish office will inform you immediately and you can then select an alternative memorial.

Remember:

The only way to reserve a memorial is to call Sacred Heart of Jesus Parish office at 330-336-3049.

Detailed Cost Estimates
Parish Offices, Rectory, and School

| Parish Offices and Rectory | |
|-----------------------------------|--------------------|
| Pre-Construction Work Costs | \$278,500 |
| Construction Work Costs | \$1,129,000 |
| Site Work Costs | \$167,500 |
| Non-Building Costs | \$103,300 |
| Miscellaneous Costs | \$12,500 |
| Total | \$1,690,800 |

| Parish School Addition | |
|-------------------------------|--------------------|
| Pre-Construction Work Costs | \$401,800 |
| Construction Work Costs | \$1,468,800 |
| Non-Building Costs | \$47,300 |
| Miscellaneous Costs | \$14,100 |
| Total | \$1,932,000 |

Cost Summary
Parish Offices, Rectory, and School

| | |
|----------------------------|--------------------|
| Parish Offices and Rectory | \$1,690,800 |
| Parish School | \$1,932,000 |
| Total | \$3,622,800 |



Pledge Payment Plans

| Total Pledge | 10% Down Payment | | 36 Monthly Payments |
|--------------|------------------|------|---------------------|
| \$100,000 | \$10,000 | plus | \$2,500 monthly |
| 75,000 | 7,500 | plus | 1,875 monthly |
| 50,000 | 5,000 | plus | 1,250 monthly |
| 25,000 | 2,500 | plus | 625 monthly |
| 15,000 | 1,500 | plus | 375 monthly |
| 10,000 | 1,000 | plus | 250 monthly |
| 7,500 | 750 | plus | 187 monthly |
| 5,000 | 500 | plus | 125 monthly |
| 3,000 | 300 | plus | 75 monthly |

Tax Advantages of Charitable Giving

Federal and State laws on both income and inheritance taxes are designed to encourage gifts to religious organizations. Gifts may be made a number of ways and are highlighted below.

Gifts from Current Income... the amount that may be deducted from an individual's current income is based on federal income tax brackets. Information in this brochure is not intended for specific legal advice, therefore the individual should discuss tax advantages with his/her tax consultants.

Gifts in the Form of Securities... the donor pays no capital gains taxes on securities that have increased in value since originally acquired and may deduct the full current market value from taxable income.

Official receipts will be given to all contributors and may be used for federal income tax purposes.





Parish Prayer for the Success of Our Efforts to Grow in Grace and Service

O God, you are the one who truly prospers the work of our hands for without you we can do nothing. We entrust to you all our hopes for the future of our parish community. Please bless our efforts as we strive to grow in grace and service so that we may carry on the work begun by Jesus Christ our Lord and Savior. Help us to be good stewards of the many gifts and treasures you have entrusted to us. Give us generous hearts so that the spread of the Gospel can continue in our community. Help us to work together and put all division aside so that we may do everything for your honor and glory. May we see your hand in the work we do as you guide us and bring us together in your Name and in your love. We thank you for all that you have done for our parish in the past that has made our parish what it is today. You have inspired the generations before us with a spirit of love and sacrifice; bless us in the same way so that we may continue to give our children and grandchildren a solid foundation in our Catholic faith. Hear our prayers and grant them according to your divine will through Christ our Lord.

Amen.

Sacred Heart of Jesus Parish
Wadsworth, Ohio 44281

Phone: 330-336-3049 • Web: shofjesus.com

Capital Campaign Committee

Anthony Agnesi, Chairman
(330) 334-1767

Paul Cantwell
(330) 335-9491

James Carps
(330) 335-6161

James Clark
(330) 336-6190

Richard Day
(330) 239-0232

Kevin Dunn
(330) 887-9082

Lisa Dunn
(330) 887-9082

Mary Gegick
(330) 334-3668

David Kennedy
(330) 336-1212

Joseph McNeill
(330) 927-9568

James Renacci
(330) 336-9277

Dominick Sorrent
(330) 598-1028